

Wireless Printing from PC Windows 7/8/8.1/10

1. Login to the wireless network “TouroCOM” on your notebook/laptop
2. Open Windows Explorer (Windows Key+E)
3. In address bar type: \\print.midmed.touro.edu
4. You’ll be prompted to login, do so with the same credentials that you use to login to the “TouroCOM 802.1x” or “TouroCOM” Wi-Fi.
5. You will see several printers displayed, double click on the one called “**wifiprinter1**”
6. The driver will download and you’ll be asked if you trust this printer
7. Select install driver
8. Once it has finished installing, you will see it as an available printer under ‘Devices & Printers’

Wireless Printing on MAC OSX

Before you start, make sure that you are logged on to the “TouroCOM 802.1x” or “TouroCOM” wireless network and are able to access the Internet.

You will also need to download and install the driver before you proceed

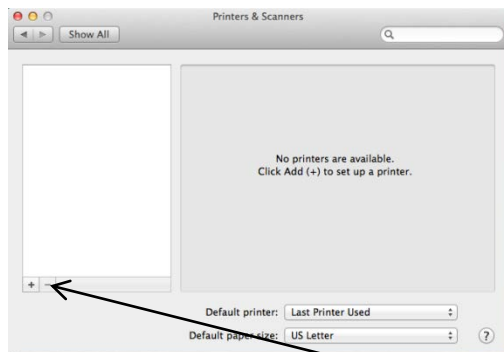
You can download the driver here:

<https://touro.box.com/s/sdvgx745u79gmg29tfnquriw6mnp06i> (mac OSX 10.10 and up)

For older versions of OSX please visit the canon website direct and select the appropriate operating system:

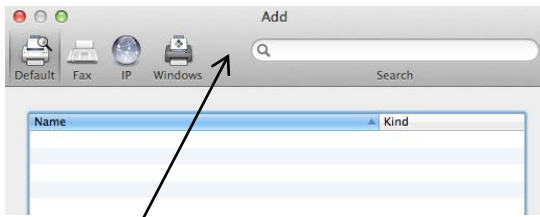
https://www.usa.canon.com/internet/portal/us/home/support/details/copiers-mfps-fax-machines/multifunction-copiers/imagerunner-advance-6575i?tab=drivers#Z7_MQH8HIC0L88RB0AMD0F1Q42K25

1. Open System Preferences -> Print & Scan.

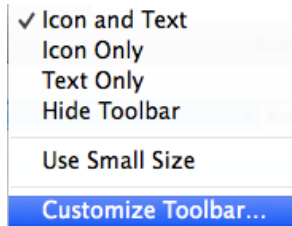


2. To add a new printer selects the plus icon.

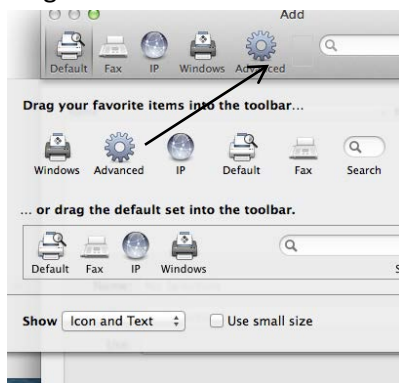
3. The first time you do this, you have to add the Advanced button to the add printer toolbar.



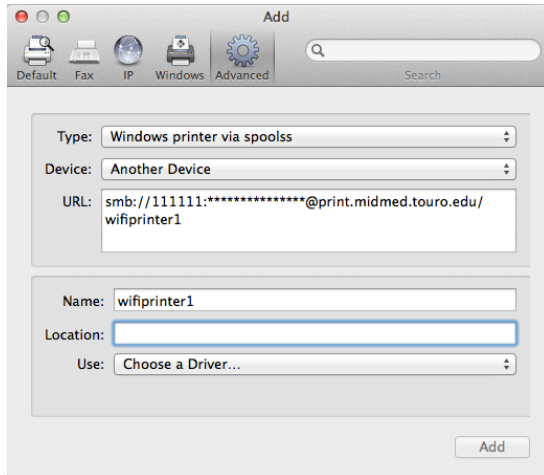
- Ctrl+Click on the toolbar – a drop down menu will appear
- Select "Customize Toolbar..."



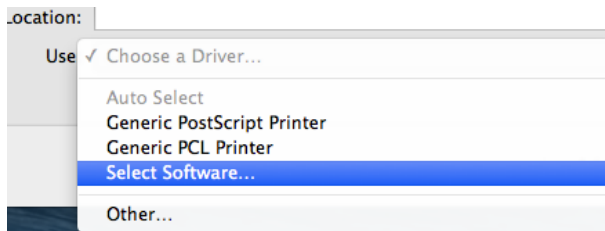
- Drag the Advanced button onto the toolbar.



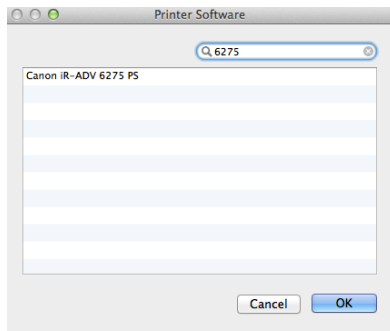
4. Select Advanced then specify the following printer settings
 - Type *select*: Windows printer via spoolss
 - Device *select*: Another Device
 - Under URL type the following:
smb://username:password@print.midmed.touro.edu/wifiprinter1
Username: is your midmed username
Password: is your midmed password



- Location (optional): the physical location of the printer, e.g. "Library Back Room"
- Use: Click on the down arrow and the click 'Select Software'



- In the new window that appears, type 6575 and then select the driver that appears in the list.



- Select Add button to save this printer.

NOTE: After sending a print job to printer if a window pops up asking for username and password, login using your midmed domain username and password with midmed\ before it.

for example: midmed\username